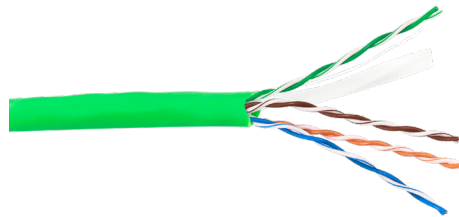
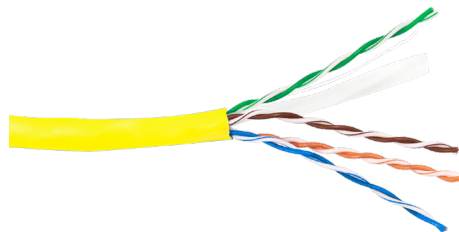


(Blue)



(Green)



(Yellow)

DATA TEK[®]

Quality Data Products

24AWG CAT6 UTP Cable - 305m Box

03JDCAT6BL	Blue
03JDCAT6GN	Green
03JDCAT6YL	Yellow

FEATURES:

- 305m high-quality CAT6 UTP data cable
- Constructed with high-purity oxygen-free copper conductors for enhanced signal integrity
- CE CPR Eca flame-retardant rated PVC outer sheath
- Customised colour-coded jacket options: Blue, Green, Yellow
- Superior mechanical strength and flexibility for easy installation
- 10-Year Manufacturer Warranty

APPLICATIONS:

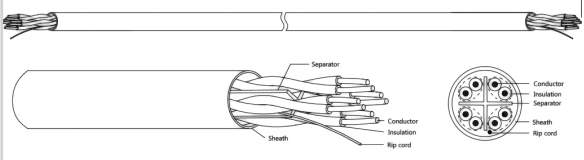
- High-speed LAN, Gigabit & 10-Gigabit Ethernet networks
- Voice, data, and video distribution
- Commercial and residential networking
- Patch leads, structured cabling systems, and backbone connections

CABLE TYPE	Data Cable
CABLE CLASS	Category 6 (CAT6)
CABLE COLOUR	Blue/Green/Yellow
CABLE GAUGE	24AWG
CABLE MATERIALS	Bare Copper, PVC Jacket
APPROVALS	RCM Approved
BOX TYPE	Reel in Box
LENGTH	305m
PACKAGING	Display Box
WARRANTY	10 Years

FOR MORE INFORMATION:

☎ 1300 601 915 ✉ orders@bitek.com.au 🌐 www.bitek.com.au

DISTRIBUTED BY: **BITEK PCY LTD**

TECHNICAL SPECIFICATIONS		MECHANICAL SPECIFICATIONS		TRANSMISSION CHARACTERISTICS (100M @20°C)						
CONDUCTOR		TENISLE STRENGTH	Sheath≥13.5MPa	FREQUENCY (MHz)	PHASE DELAY ≤ns	IL ≤dB	TCL≥dB ±	EL TCL≥dB ±	NEXT≥dB	PS NEXT≥dB
MATERIAL	Oxygen Free Copper (99.97% purity)		Insulation≥16MPa	1	n/s	n/s	50.0	35.0	n/s	n/s
DIAMETER	0.53mm±0.01mm		ELONGATION AT BREAK	Sheath≥150%	4	552.0	4.0	44.0	23.0	66.3
INSULATION		Insulation≥300%		INSTALLATION BENDING RADIUS	8	547.0	5.6	41.0	16.9	61.8
MATERIAL	HPDE	>8 times of outer cable diameter	10		545.0	6.4	40.0	15.0	60.3	57.3
MIN. AVERAGE THICKNESS	0.21mm	CONDUCTOR ELONGATION AT BREAK	≥10%		16	543.0	8.1	38.0	10.9	57.2
DIAMETER	0.95mm±0.1mm		ENVIRONMENTAL SPECIFICATIONS		20	542.0	9.0	37.0	9.0	55.8
COLOUR (4 PAIRS)	Blue, White/Blue	SHRINKAGE OF INSULATION	≤5%	25	541.0	10.1	36.0	7.0	54.3	51.3
	Orange, White/Orange	COLOUR MIGRATION RESISTANCE OF INSULATION	No Migration	30 ±	540.6	11.0	35.2	5.5	53.1	50.1
	Green, White/Green	SHEATH TENSILE STRENGTH AND ELONGATION AT BREAK AFTER AGING	≥12.5MPa, ≥100%	31.25	540.0	11.3	35.1	n/s	52.9	49.9
	Brown, White/Brown		No cracking after the test	62.5	539.0	16.3	32.0	n/s	48.4	45.4
SEPARATOR		LOW TEMPERATURE BENDING TEST	-20°C to +60°C	100	538.0	21.0	30.0	n/s	45.3	42.3
MATERIAL	PE	HEAT SHOCK TEST		200	537	30.7	27.0	n/s	48.0	37.8
SPECIFICATION	Translucent 4.5x0.4mm	OPERATING TEMPERATURE		250	536.0	34.8	26.0	n/s	39.6	36.3
RIP CORD	Polyester	INSTALLATION TEMPERATURE	0°C to +50°C	FREQUENCY (MHz)		EL FEXT≥dB	PS EL FEXT ≥dB	RL≥dB	DELAY SKEW≤ns	Zc(Ω)
MATERIAL		500D	STORAGE TEMPERATURE AND HUMIDITY	-10°C to +40°C, <60% (RH)	1	n/s	n/s	n/s	n/s	n/s
SPECIFICATION	Polyester	SECURITY SPECIFICATIONS		4	56.0	53.0	23.0	45.0	100±15	
SEATH	PVC	VERTICAL FIRE PROPAGATION TEST	Comply with IEC 60332-1-2	8	49.9	46.9	24.5			
MIN. AVERAGE THICKNESS	0.5mm	PACKAGING		10	48.0	45.0	25.0			
DIAMETER	6.0mm±0.3mm	CABLE LENGTH	305.0m±1.5m	16	43.9	40.9	25.0			
COLOUR	White	INNER CARTON DIMENSIONS	416.0mm x 412.0mm x 220.0mm (LxWxH)	20	42.0	39.0	25.0			
ELECTRICAL SPECIFICATIONS		PACKAGING METHOD	305.0m a carton, one master carton with 2 inner cartons	25	40.0	37.0	24.3			
MAX. DC RESISTANCE OF A SINGLE CONDUCTOR	8.7Ω/100m	NET WEIGHT	≥10.5kg	30 ±	38.5	35.5	23.8			
MIN. INSULATION RESISTANCE	5000MΩ·km	GROSS WEIGHT	≥11.5kg	31.25	38.1	35.1	23.6			
MAX. DC RESISTANCE UNBALANCE	2% (pair intra) 4% (pairs inter)	DIMENSIONS (mm/inch)		62.5	32.1	29.1	21.5			
DIELECTRIC STRENGTH	No breakdown with 1KV DC for 1min	305000mm ± 1500mm [1000.66ft ± 4.92ft]		100	28.0	25.0	20.1			
TRANSMISSION SPECIFICATIONS				200	22.0	19.0	18.0			
CHARACTERISCTIC IMPEDANCE	100±15Ω	NOTE		250	20.0	17.0	17.3			
NEAR END CROSS TALK	≥39.30dB/100m @250MHz	Executive standard for the above parameters: Q/DXJ 067-2019		"n/s"=Not Specified						
MAX. ATTENUATION	34.8dB/100m @250MHz	" " = Unless otherwise customer stated the results default to not shown in test report but comply with standard								
RETURN LOSS	≥17.3dB/100m @250MHz									